

Name: _____

Sign up for camps
and tournaments!

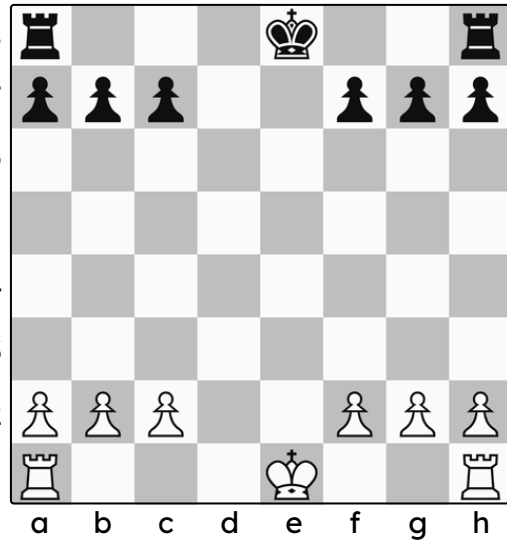
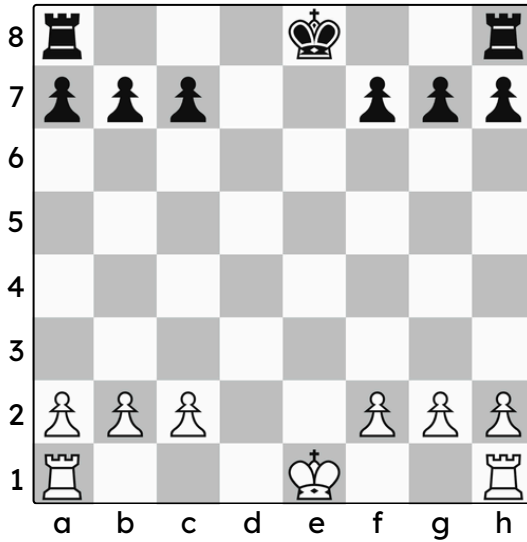


Castling

Castling is the only move in chess in which we can move two pieces on the same turn. It's a great way to get our king to a safe place and help bring one of our rooks closer to the center of the board.

Directions:

Draw arrows to show where the white king and rook go when we castle *kingside*.



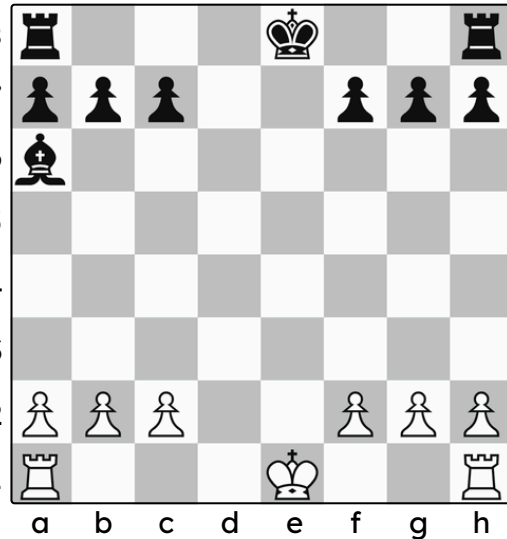
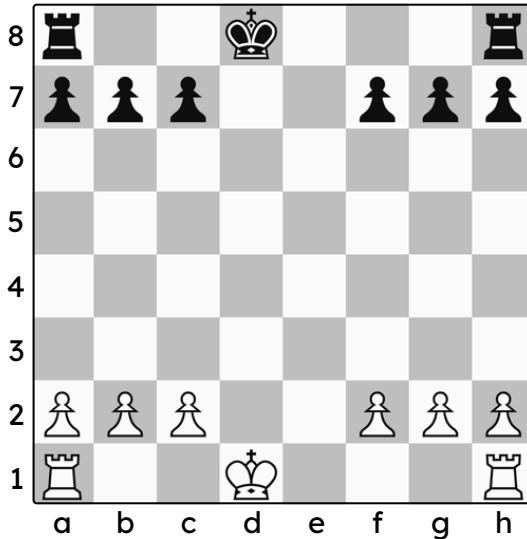
Directions:

Draw arrows to show where the white king and rook go when we castle *queenside*.

Directions: Can white castle?

YES

NO

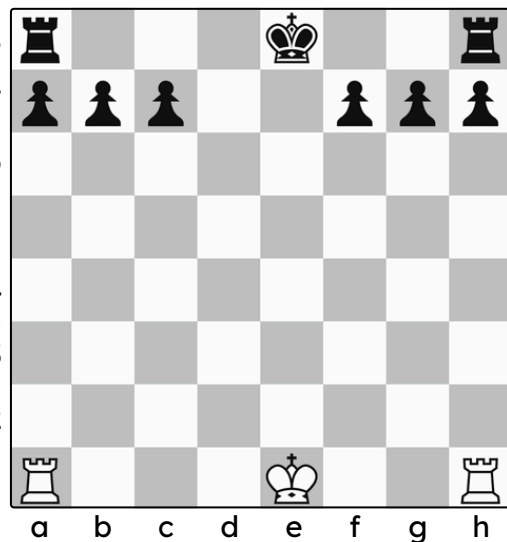
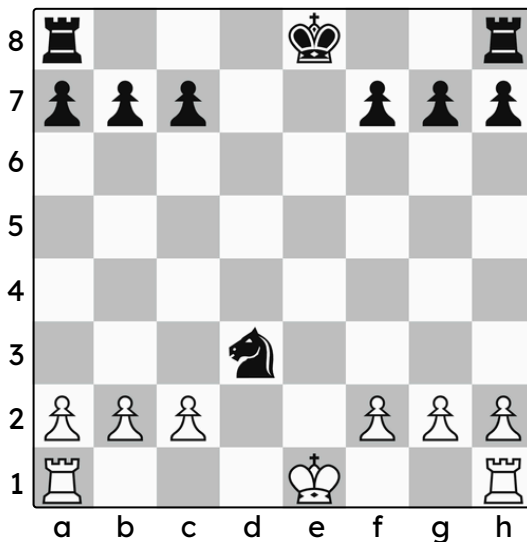


YES

NO

YES

NO



YES

NO