

Name: _____

Sign up for camps
and tournaments!



Pin

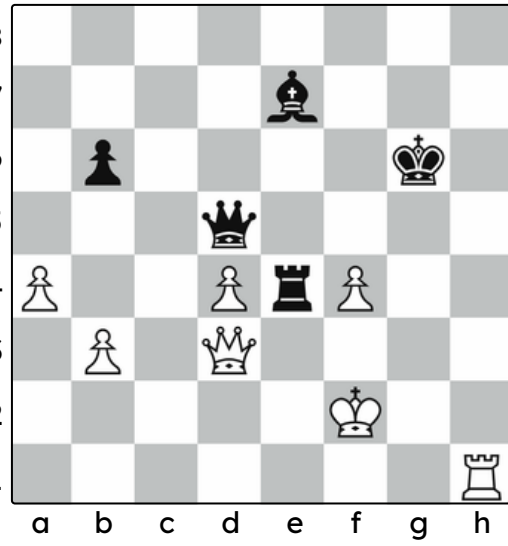
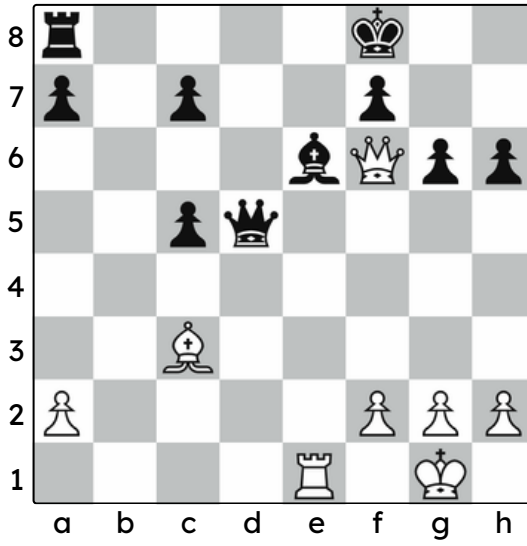
In chess, a pin is a move that attacks a small piece in front of a bigger piece. If the front piece moves out of the way, we can capture a high value piece behind it!

Directions:

Write down
white's two
moves (and
black's response)
that win points
through pins

1. _____

2. _____

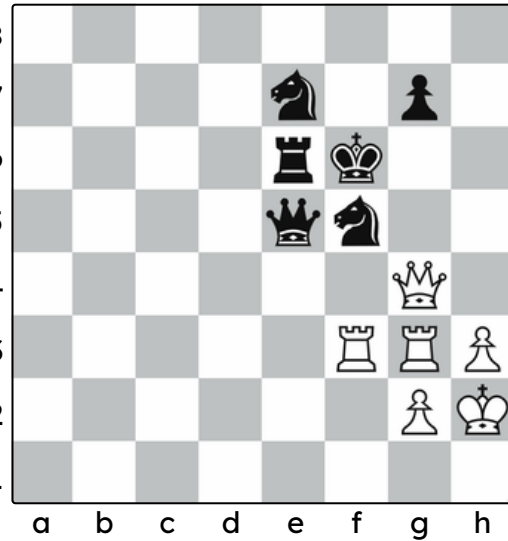
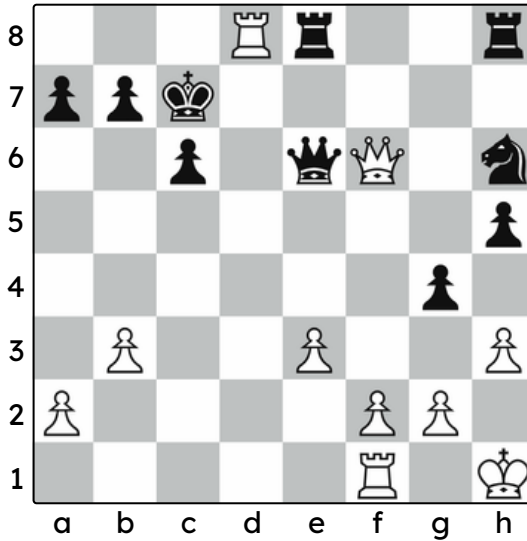


1. _____

2. _____

1. _____

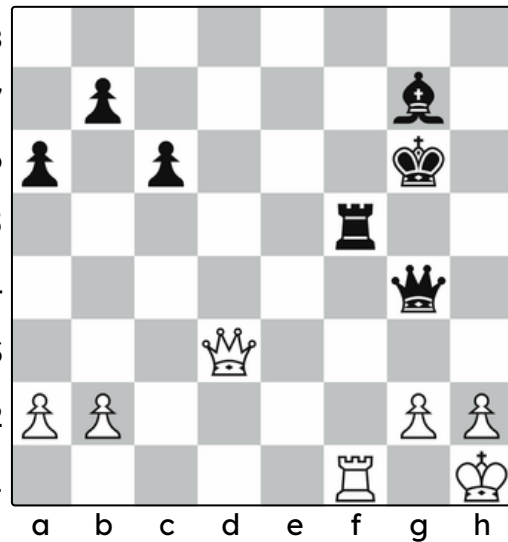
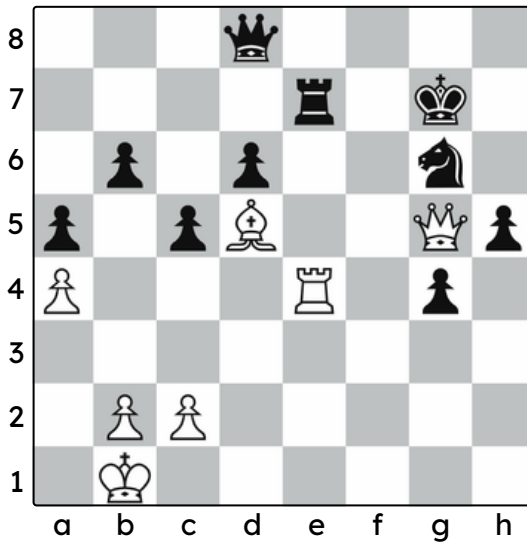
2. _____



1. _____

1. _____

2. _____



1. _____

2. _____