

Name: _____

Sign up for camps
and tournaments!



Safe Squares

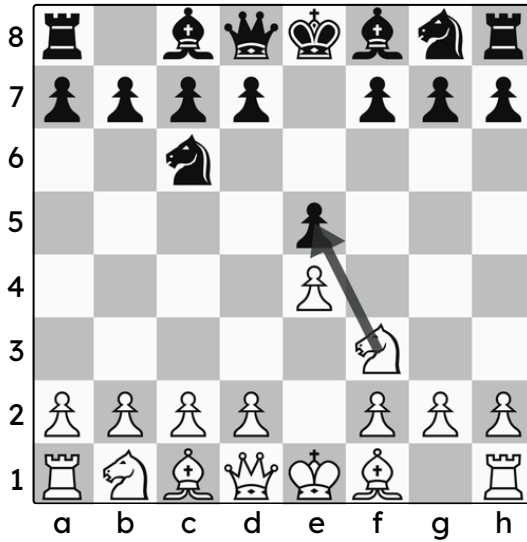
When we cross the street, we always look both ways to make sure it's safe. In chess, we do the same thing when we're about to move a piece: make sure that its new square is safe so we avoid losing points.

Directions:

Is this move safe? Circle the correct answer.

YES

NO



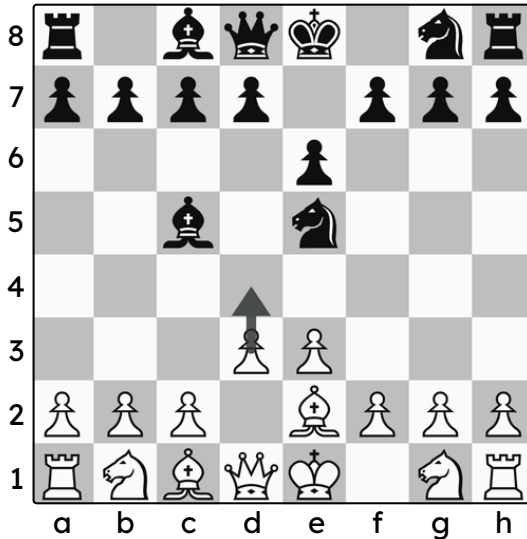
Hint: equal trades are considered safe

YES

NO

YES

NO

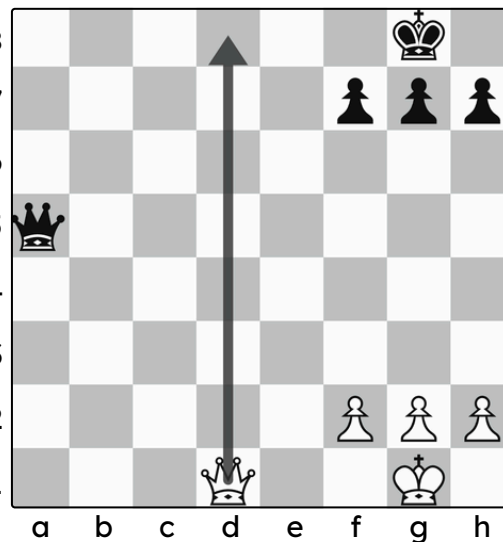
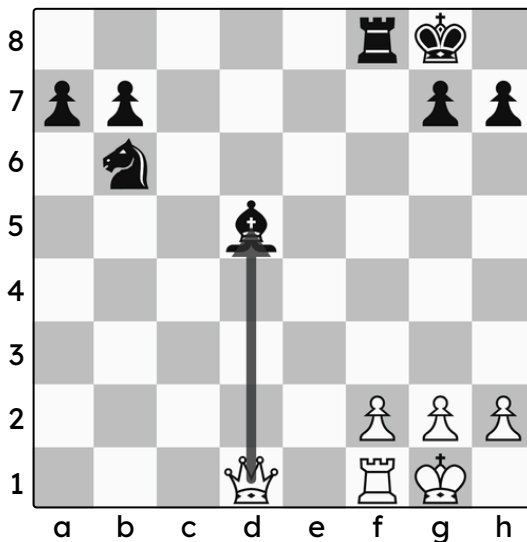


YES

NO

YES

NO



YES

NO