

Name: _____

Sign up for camps
and tournaments!



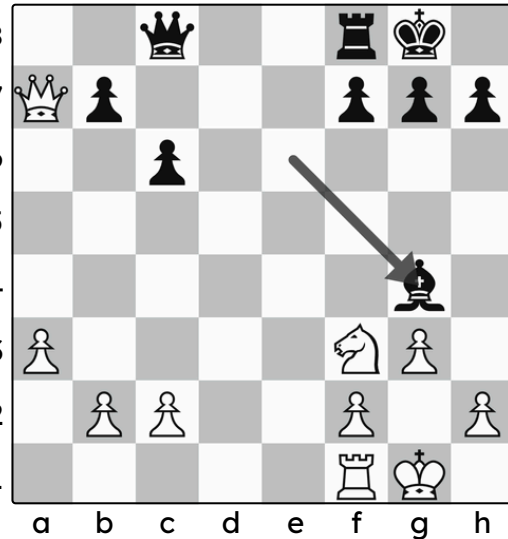
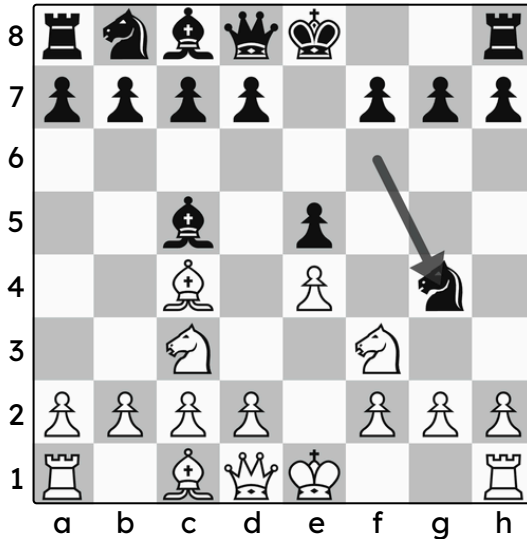
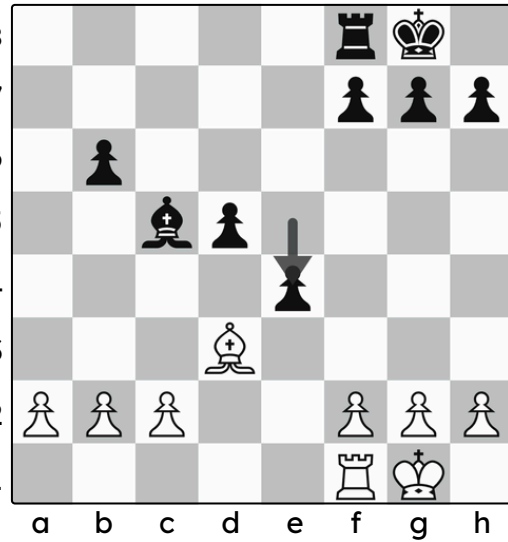
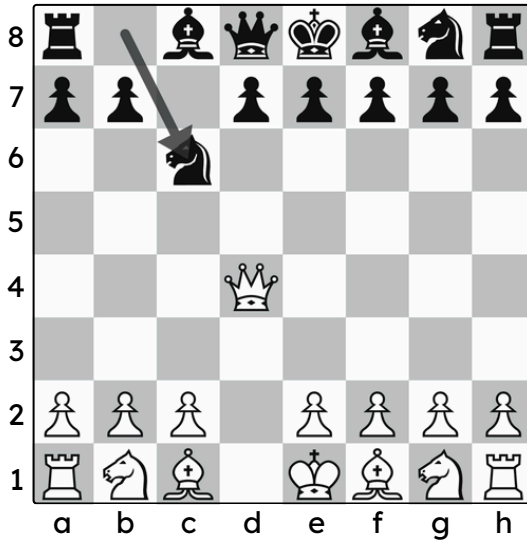
Threats

In chess, when one side makes a threat they're saying "if I got another move, I'd do *this!*" It's important to identify when our partner makes a threat so we don't lose points or, worse yet, get checkmated!

Directions:

Black's last move is highlighted with an arrow.

Draw your own arrow to the move black is threatening to play next.



Directions: One of our pieces is under attack! Circle the white piece that's threatened.

